



eventus[®]

WORKFLOW & WORKFORCE MANAGEMENT SYSTEM

EVENTUS[®] AND THE RAILROADS

www.eventus.eu

WHAT IS EVENTUS[®]?

Eventus[®] is a **MULTI AWARD WINNING ENTERPRISE WORKFLOW AND WORKFORCE MANAGEMENT SOLUTION** designed to dramatically increase the work efficiency of companies. Due to its core functions and architecture, Eventus[®] has the added advantage that it can act as a high level umbrella-application above existing subprocesses, harmonizing these, and can also play a significant role in the integration of enterprise applications.

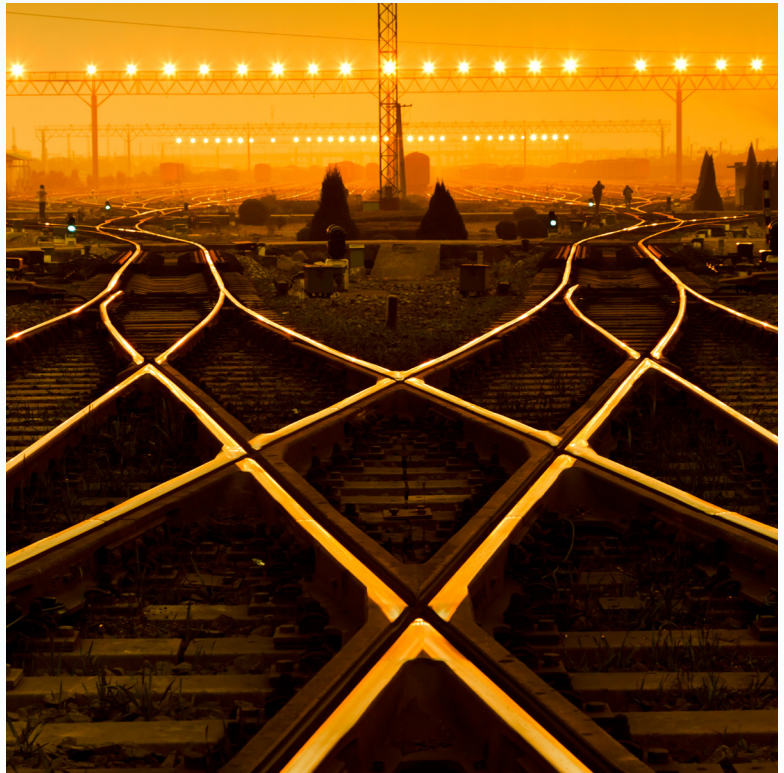
WHERE CAN IT BE USED?

Eventus[®] is able to cater for all requirements in large and mid-size companies in any industry – including railways, taking its peculiarities into consideration – where the precise administration and control of workflows, tasks and work force is necessary.

EVENTUS[®] MAIN FEATURES IN RAILROAD TRAFFIC

The Eventus[®] solution is built on optimization, so the applied process management and resource management functions support optimal operation as well:

- automatic task dispatching with map integration and the option of manual override
- customizable process planning and parametrization
- handling of authorization
- priority and exception handling
- incident, problem and change management
- generation of ad-hoc and out-of-the-box reports and queries
- archiving and logging
- notifications (email, sms)
- integration with other systems
- the support of mobile work on Android, IOS, and Windows clients (also in offline mode)



ADVANTAGES

- the modular build-up of processes enable quick process implementation
- the processes can be easily modified or customized, they can be launched automatically in a data-driven way
- dynamic process planning
- situation sensitive handling of exceptions
- access rights can be linked to functions, processes or even process steps
- software events can traced back, enabling the support of problem localisation and the finding of possible solutions
- flexible, customizable and configurable framework that can be integrated with other solutions as well while providing easy to use upgrade options



A SUCCESSFUL INSTALLATION

During the creation of MÁV's own GSM-R network Fornax ICT contributed to the efficiency of the Operating Support Systems area of the system with four separate IT solutions:

- Fornax's own product, **Eventus®** supports the operation of the GSM-R network efficiently, managing fault repair, change management, maintenance, and provisioning.
- The **NI2 software** provided by Fornax creates a technical directory for the network, both in the physical and in the logical sense. This includes all material assets, such as buildings, optical cables or transmission towers.
- **OpenKM** is a document handler software managing and version controlling all documentation related to the network.
- Finally, **Graylog2** analyses logs created by software and hardware elements of the GSM-R network, and offers efficient queries in the data.

Thanks to the entire system the internal communication of employees became a lot more simple and efficient, which in turn increased the internal efficiency of the organization and is set to decrease the long term costs of operation even after the return of the investment.

EVENTUS® IN NUMBERS

Controls the work of more than 10 000 people
Performs more than 300 000 tasks daily
Dispatches and controls more than 50 000 tasks to human work force
More than 50 000 000 processes executed by now
Integrated with more than 100 systems
Integration to more than 150 partner systems
More than 10 million integrated and managed devices

EVENTUS® HISTORY

15 years of acknowledged quality, proven advantages
1999-2000 initial developments, first installation
2003 WfMC Silver prize
2007 TSS development
2012 European SW Award
2013 Oracle OpenWorld

www.eventus.eu

